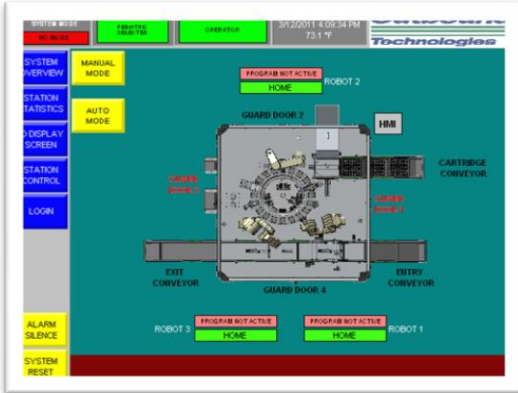


**Leading Medical Processing Manufacture Commissions Drug Cartridge Inspection Line**



**Main Objective:**

The purpose of this project was to design and build a system that can assemble and inspect a drug cartridge and carrier assembly. The customer desired an automated assembly machine that could inspect the incoming parts before assembly of the two components, then assemble the components and examine the result.

**Customer Results:**

The carrier assembly and inspection functioned as designed and provided a means for 100% inspection of the press depth of the assembled carriers. The requested cycle time of 2.4 seconds per part was achieved by producing two parts every 4.6 seconds.

**Overview:**

The equipment designed and provided by Outbound Technologies consisted of (10) stations on a rotary indexing ring, entry conveyor for trays of carriers, (3) robots for pick and place of components, (9) high resolution cameras for PC based inspection system, a precision pneumatic press station, cartridge conveyor for trays of cartridges, exit conveyor for trays of assembled parts and reject chutes for bad parts

*Every owner, manager, and key decision maker is an engineer. They have all been through the ranks and learned this business before they were given the responsibility to manage it. Diversity is also a key to our success. From a technical standpoint specific areas of expertise include: High Temperature applications, Automotive Paint Finishing, Pharmaceutical Automation, Web Handling Applications, Custom Software Solutions, and Safety. As a Systems Integrator, we are a 50/50 split between Continuous Process and Discrete Automation expertise.*

**Outbound Technologies Inc.**

30026 Research Drive, New Hudson, MI 48165, USA

Tel: (248)-735-5000 Fax: (248)-735-5001

[www.outboundtech.com](http://www.outboundtech.com)

Email: MI@outboundtech.com

