

Leading Water Treatment Facility Upgrades Electrical Process Controls



Main Objective:

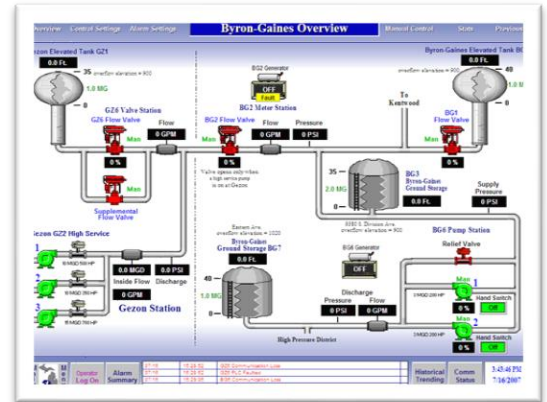
The purpose of this project was to provide electrical process controls upgrade in addition to adding process controls and monitoring for a new pump station and ground storage tank located at an existing water treatment facility.

Customer Results:

All systems controls performed as designed. OTI was contracted, post-project, to provide additional training and customer-requested additions.

Overview:

- ❖ Existing standards were utilized from recent projects to propagate system-wide conformity. New RSLogix 500 SLC programs, RSLogix 5000 ControlLogix programs, and PanelBuilder32 HMI programs were created for all systems and existing Wonderware InTouch SCADA applications were updated.
- ❖ provided the following services:
 - HMI software design engineering
 - PLC software design engineering
 - Documentation services
 - Commissioning services
 - Training services
 - Stand-by services



Every owner, manager, and key decision maker is an engineer. They have all been through the ranks and learned this business before they were given the responsibility to manage it. Diversity is also a key to our success. From a technical standpoint specific areas of expertise include: High Temperature applications, Automotive Paint Finishing, Pharmaceutical Automation, Web Handling Applications, Custom Software Solutions, and Safety. As a Systems Integrator, we are a 50/50 split between Continuous Process and Discrete Automation expertise.

Outbound Technologies Inc.

30026 Research Drive, New Hudson, MI 48165, USA

Tel: (248)-735-5000 Fax: (248)-735-5001

www.outboundtech.com

Email: MI@outboundtech.com

